

# Technical Specifications

Product Information	Atrium Plus™ Mats
Yarn type	100% Polyamide 6.6 – mono & multi filaments
Yarn construction	High Twist and Heat Set combination of mono & multi filaments
Textile weight	Approx. 1075 gms/m <sup>2</sup>
Backing type	High quality rubber backing with Gripper® option recommended for carpeted floors (200 cm width available with flat back only)
Total thickness	Approx. 8 mm
Total weight	Approx. 3240 gms/m <sup>2</sup> (Tolerance +/- 5%)
Textile Dyeing Technology	Millitron®
Textile light fastness	Xenotest ISO 105-B01: >6 on blue scale
Wear resistance	Vetterman drum test 66,000 cycles
Fire resistance classification	EN ISO 13501: D <sub>fl</sub> -s1
Mat sizes in cm	Please refer to our price list
Guarantee	1 year guarantee against manufacturing defects and 5 year wear guarantee according to installation & maintenance recommendations.

Product Information	Atrium Plus™ Rolls
Roll size in cm	200x2500
Backing type	Everwear™ vinyl backing (2 mm thickness)
Total weight	Approx. 3575 gms/m <sup>2</sup> (+/- 5%)
Fire resistance classification	EN ISO 13501: C <sub>fl</sub> -s1
All other specifications are the same as for Atrium Plus™ mats	

All specifications are according to ISO 9001 Quality certification and ISO 14001 Environmental certification, and are subject to change to meet the ongoing improvements and innovation of our products.

#### Milliken - Europe, Africa, Middle East

Hilton Fold Lane  
Middleton  
M24 2HZ Manchester  
United Kingdom  
T: +44 1942 612999  
F: +44 1942 612499  
E: Enquiries: matsinfoeurope@milliken.com  
E: Orders: matsorderseurope@milliken.com  
United Kingdom Free phone: 0800 964 569  
Danish Free phone: 80 32 00 57

#### Milliken - Americas

920 Milliken Road Spartanburg  
South Carolina 29303  
T: 1.800.342.5539  
F: 706.880.5358  
E: Enquiries: matsinfoamericas@milliken.com  
E: Orders: matsordersamericas@milliken.com

#### Milliken - Asia, India, Australia, New Zealand

Unit 2106 & 2105, 2709 & 2708  
2 Grand Gateway  
3 Hongqiao Road  
Xuhui District Shanghai  
China 200030  
T: +86 21 61 455555  
F: +86 21 61 455558  
E: Enquiries: matsinfoasiapacific@milliken.com  
E: Orders: matsordersasiapacific@milliken.com

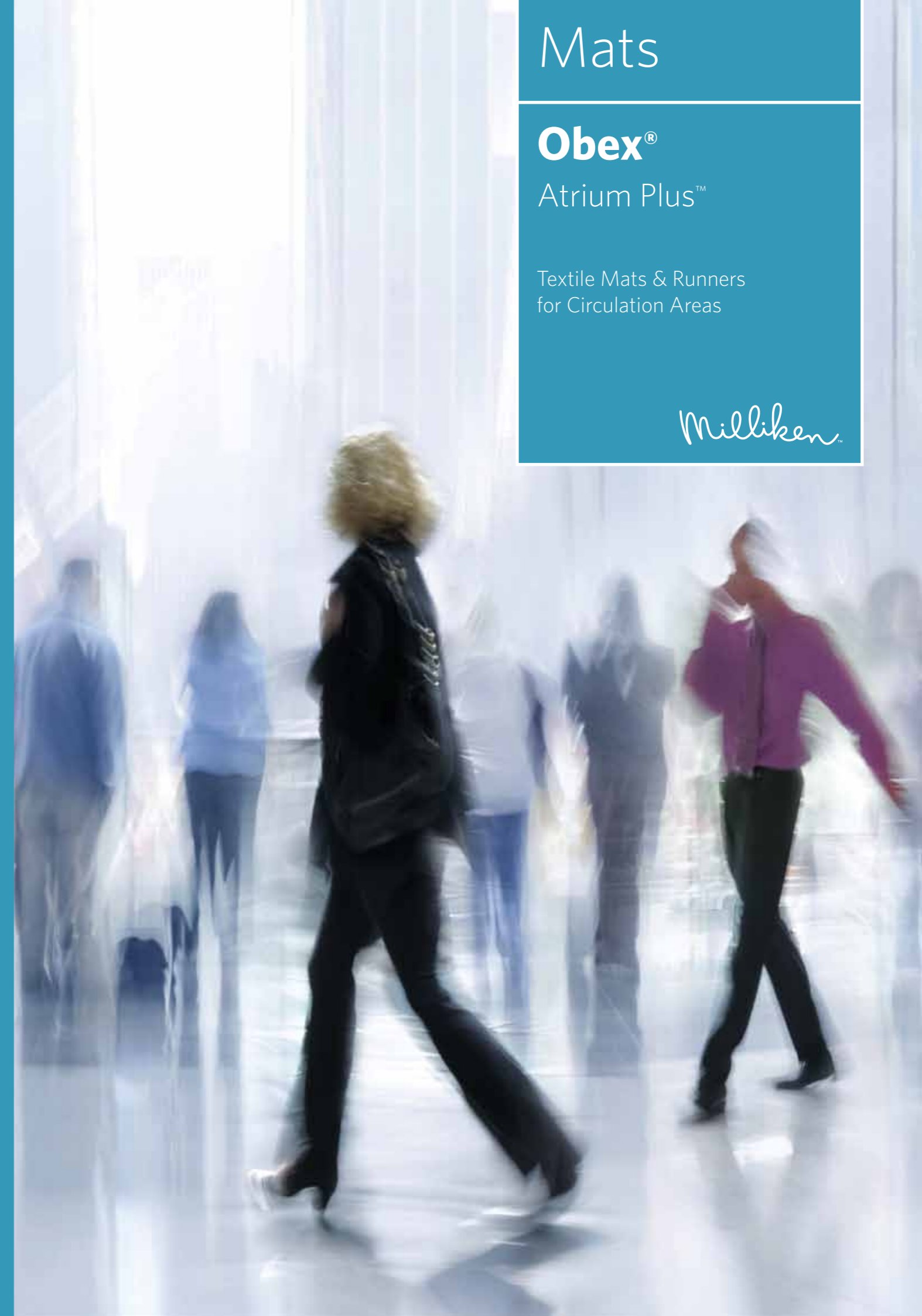
# Mats

## Obex®

### Atrium Plus™

Textile Mats & Runners  
for Circulation Areas

Milliken™





## The Textile Matting Performance

The unsurpassed functionality of Atrium Plus™ is a result of the combination of two types of polyamide 6.6 high quality fibres – twisted together and heat set before tufting:

- The multi filaments capture moisture instantly when people walk on the textile.
- The mono filaments work as tough scrapers against dirt particles carried by shoes.

- The purposely open tufting construction provides room for dirt storage, whilst allowing easy dirt release for maintenance.

Atrium Plus™ rolls come with a high quality Everwear™ vinyl backing, which is easy to bond when fitted wall to wall or cut to desired length to produce runners or tailor made mats.

## Atrium Plus™ mats on rubber backing

Atrium Plus™ is primarily designed for high traffic applications such as reception and circulation areas. Combining the unique patented Obex® textile with a non-staining and long lasting nitrile rubber backing, Atrium Plus™ mats can be simply loose laid on the floor. They offer a superior solution to protect floor coverings. A large choice of standard sizes is available, as well as special sizes and runners with four rubber borders.

5 Year  
Wear  
Guarantee

High  
Quality  
Rubber  
Backing

## Installation

Atrium Plus™ mats and runners can be loose laid on the floor. For carpeted floors, the high quality rubber backing with Gripper® option is recommended. This provides excellent floor stability and superior border resistance.

When bonding Atrium Plus™ rolls to the sub floor, we advise the use of an appropriate adhesive that is compatible with Everwear™ vinyl backing. We recommend F. Ball F74 or a similar product depending on site conditions. Please refer to installation guidelines.

## Maintenance

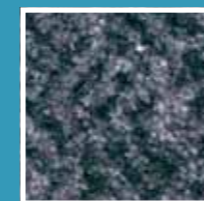
Daily vacuum cleaning is recommended to maintain full textile performance. Periodic cleaning by injection/extraction method is necessary to ensure durable efficiency (water temperature should not exceed 50°C). Dry cleaning method with chemical powder such as Millicare® is also suitable.

Maintenance frequency must be adapted to traffic and soiling conditions.

**Suitable for intense traffic - up to 5,000 people per day.**

## Atrium Plus™ Colour Range

Atrium Plus™ comes in a range of functional and contemporary colours and is totally coordinated with the Obex® Forma™ modular tile system.



Ash  
7010



Lagoon  
7020



Sand  
7012



Bark  
7016



Ammonite  
7011



Twilight  
7021



Volcano  
7014



Fern  
7018

